
505 3rd Street • Hudson, Wisconsin 54016-1694
(715) 386-4765 • FAX (715) 386-0804

Grandview Drive Street Improvements Project Weekly Project Update

June 16, 2017

The City of Hudson is currently reconstructing Grandview Drive from Vine Street to Laurel Avenue. The duration of the project is June 21, 2017 to the substantial completion date of August 18, 2017. Construction includes removals, minor storm sewer, complete curb replacement, pedestrian ramps, bituminous surfacing and restoration.

Work Scheduled for the Week of June 19th

Monarch Paving is planning on relocating all mailboxes on Grandview Drive to the southern side of Hunter Hill Road between Grandview Drive and the first driveway on Monday the 19th. Grandview Drive is anticipated to be closed on Wednesday the 21st to begin saw cutting and milling the existing pavement.

Traffic Impacts

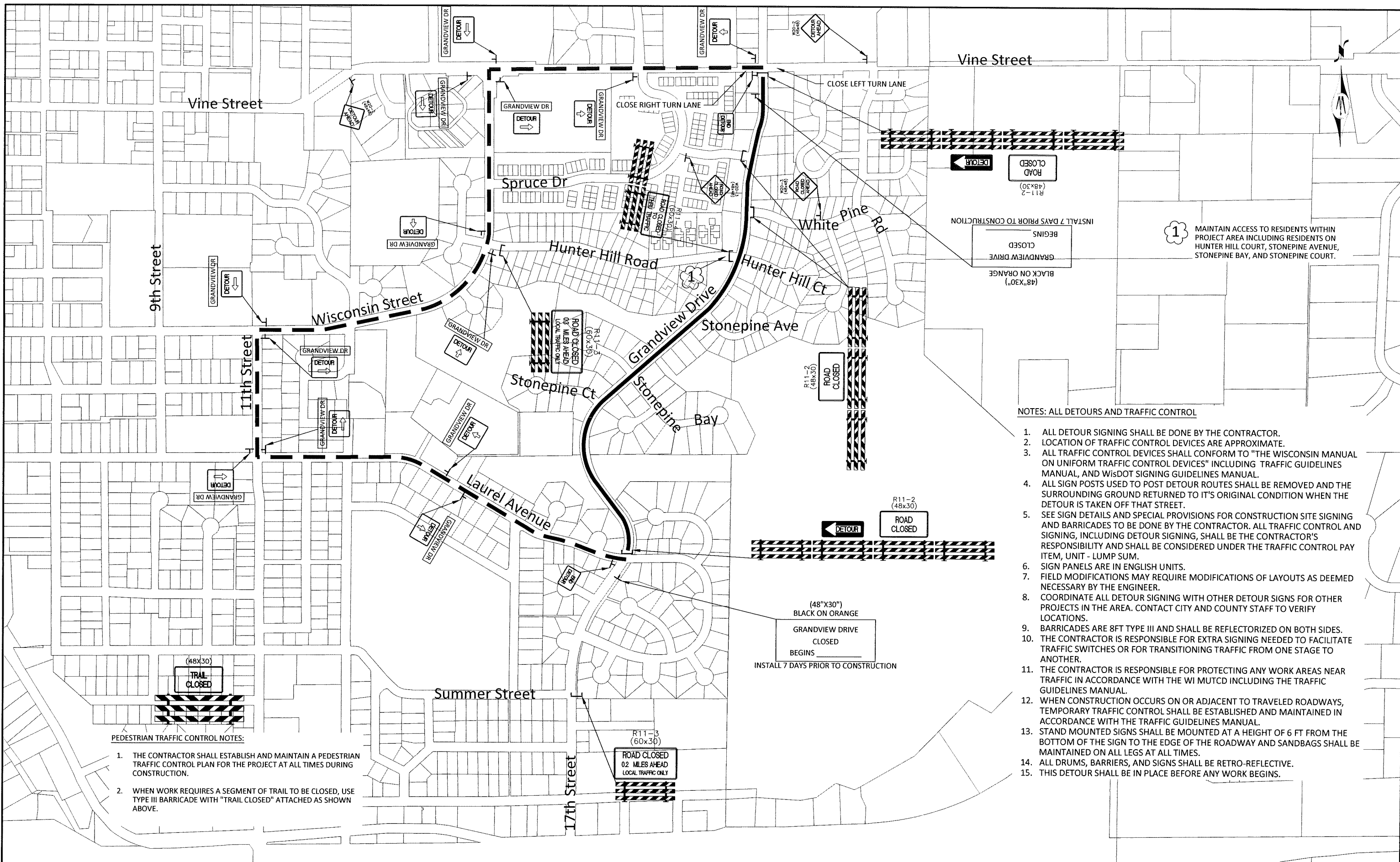
Grandview Drive will be closed off to all through traffic. It is anticipated the detour will start June 21st and last throughout the duration of the project. All access to homes on Grandview Drive or directly off of Grandview Drive (Hunter Hill Court, Stonepine Avenue, Stonepine Bay and Stonepine Court) will need to be through Hunter Hill Road. The detour plan is also posted for more detailed directions regarding access.

Parking

For public safety and project efficiency, no parking will be allowed on Grandview Drive. Residents may park in their driveways or on side streets for a majority of the project.

Other Notes

If you have any additional questions or concerns please contact the project hotline at (715) 410-8161.

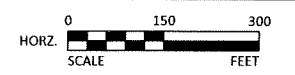


1 MAINTAIN ACCESS TO RESIDENTS WITHIN PROJECT AREA INCLUDING RESIDENTS ON HUNTER HILL COURT, STONEPINE AVENUE, STONEPINE BAY, AND STONEPINE COURT.

NOTES: ALL DETOURS AND TRAFFIC CONTROL

1. ALL DETOUR SIGNING SHALL BE DONE BY THE CONTRACTOR.
2. LOCATION OF TRAFFIC CONTROL DEVICES ARE APPROXIMATE.
3. ALL TRAFFIC CONTROL DEVICES SHALL CONFORM TO "THE WISCONSIN MANUAL ON UNIFORM TRAFFIC CONTROL DEVICES" INCLUDING "TRAFFIC GUIDELINES MANUAL, AND WISDOT SIGNING GUIDELINES MANUAL.
4. ALL SIGN POSTS USED TO POST DETOUR ROUTES SHALL BE REMOVED AND THE SURROUNDING GROUND RETURNED TO ITS ORIGINAL CONDITION WHEN THE DETOUR IS TAKEN OFF THAT STREET.
5. SEE SIGN DETAILS AND SPECIAL PROVISIONS FOR CONSTRUCTION SITE SIGNING AND BARRICADES TO BE DONE BY THE CONTRACTOR. ALL TRAFFIC CONTROL AND SIGNING, INCLUDING DETOUR SIGNING, SHALL BE THE CONTRACTOR'S RESPONSIBILITY AND SHALL BE CONSIDERED UNDER THE TRAFFIC CONTROL PAY ITEM, UNIT - LUMP SUM.
6. SIGN PANELS ARE IN ENGLISH UNITS.
7. FIELD MODIFICATIONS MAY REQUIRE MODIFICATIONS OF LAYOUTS AS DEEMED NECESSARY BY THE ENGINEER.
8. COORDINATE ALL DETOUR SIGNING WITH OTHER DETOUR SIGNS FOR OTHER PROJECTS IN THE AREA. CONTACT CITY AND COUNTY STAFF TO VERIFY LOCATIONS.
9. BARRICADES ARE 8FT TYPE III AND SHALL BE REFLECTORIZED ON BOTH SIDES.
10. THE CONTRACTOR IS RESPONSIBLE FOR EXTRA SIGNING NEEDED TO FACILITATE TRAFFIC SWITCHES OR FOR TRANSITIONING TRAFFIC FROM ONE STAGE TO ANOTHER.
11. THE CONTRACTOR IS RESPONSIBLE FOR PROTECTING ANY WORK AREAS NEAR TRAFFIC IN ACCORDANCE WITH THE WISCONSIN MUTCD INCLUDING THE TRAFFIC GUIDELINES MANUAL.
12. WHEN CONSTRUCTION OCCURS ON OR ADJACENT TO TRAVELED ROADWAYS, TEMPORARY TRAFFIC CONTROL SHALL BE ESTABLISHED AND MAINTAINED IN ACCORDANCE WITH THE TRAFFIC GUIDELINES MANUAL.
13. STAND MOUNTED SIGNS SHALL BE MOUNTED AT A HEIGHT OF 6 FT FROM THE BOTTOM OF THE SIGN TO THE EDGE OF THE ROADWAY AND SANDBAGS SHALL BE MAINTAINED ON ALL LEGS AT ALL TIMES.
14. ALL DRUMS, BARRIERS, AND SIGNS SHALL BE RETRO-REFLECTIVE.
15. THIS DETOUR SHALL BE IN PLACE BEFORE ANY WORK BEGINS.

- PEDESTRIAN TRAFFIC CONTROL NOTES:**
1. THE CONTRACTOR SHALL ESTABLISH AND MAINTAIN A PEDESTRIAN TRAFFIC CONTROL PLAN FOR THE PROJECT AT ALL TIMES DURING CONSTRUCTION.
 2. WHEN WORK REQUIRES A SEGMENT OF TRAIL TO BE CLOSED, USE TYPE III BARRICADE WITH "TRAIL CLOSED" ATTACHED AS SHOWN ABOVE.



BOLTON & MENK
 2035 COUNTY ROAD D EAST
 MAPLEWOOD, MINNESOTA 55109
 Phone: (651) 704-9970
 Email: Maplewood@bolton-menk.com
 www.bolton-menk.com

DESIGNED	MSN	NO.	REVISION	DATE
DRAWN	TJP	0	BID	05/26/2017
CHECKED	MSN		CON	06/01/2017

HUDSON, WISCONSIN
 2017 STREET IMPROVEMENTS - GRANDVIEW DRIVE

DETOUR PLAN

SHEET
C9.03

© Bolton & Menk, Inc. 2017, All Rights Reserved
 H:\HUDSON_CI_WI\112113171\CAD\C3D\L13171C903.dwg 6/1/2017 10:16:29 AM